

CKD Tatra B6A2



B6A2 Berlin



T6A2 & B6A2, Leipzig



B6A2 Magdeburg



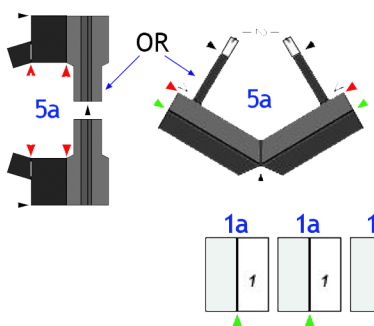
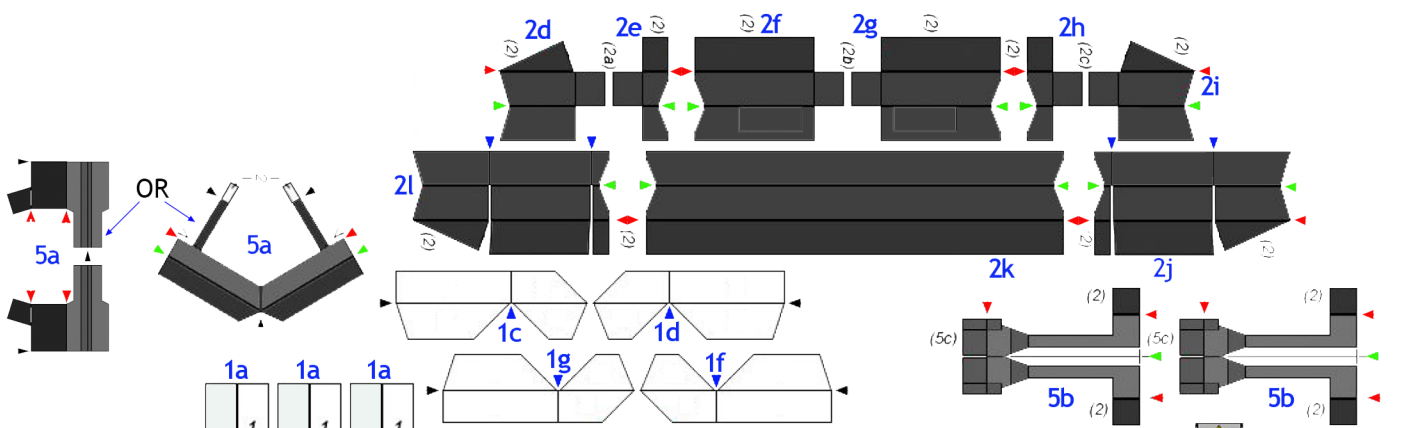
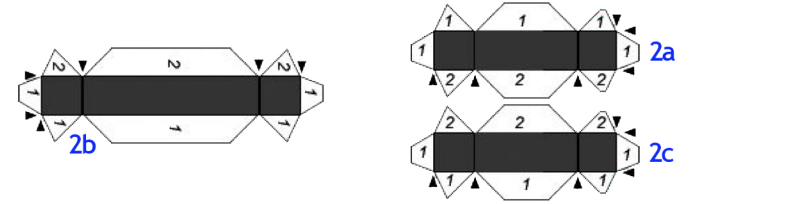
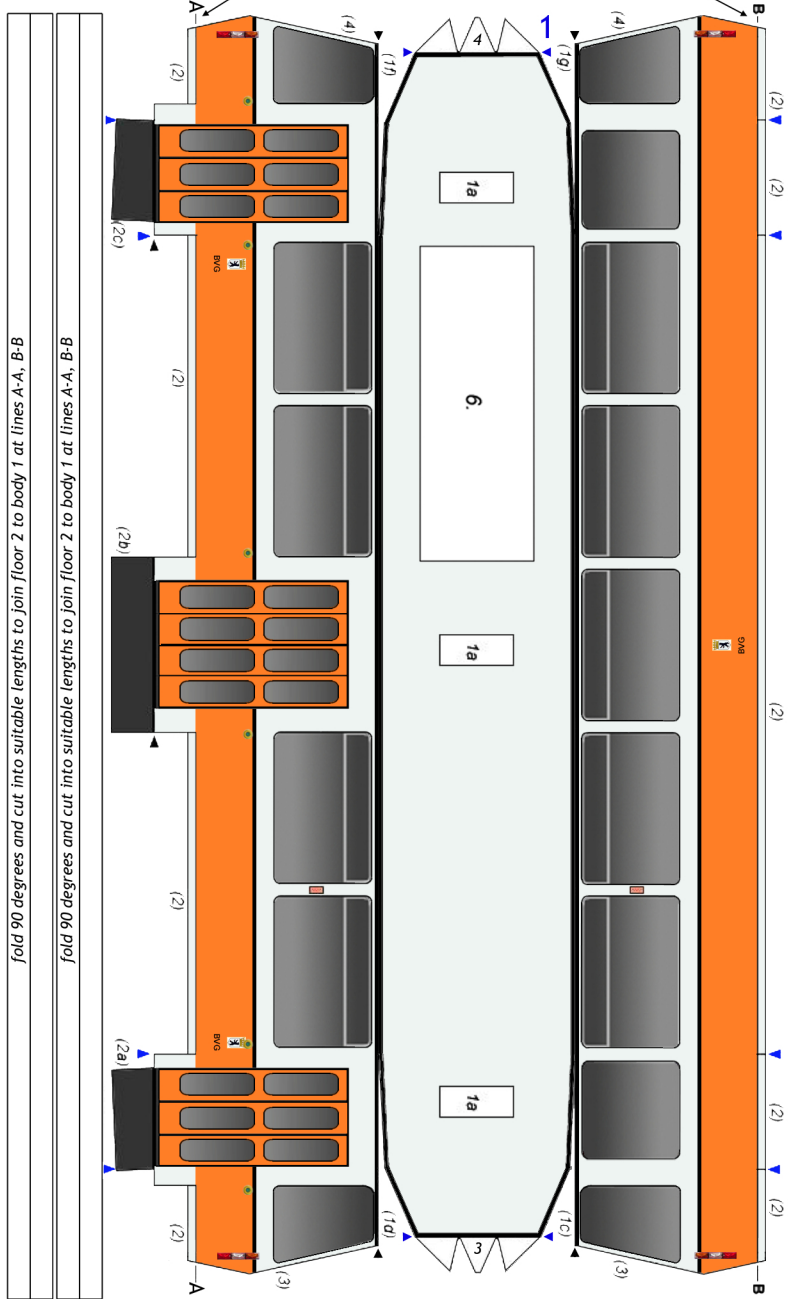
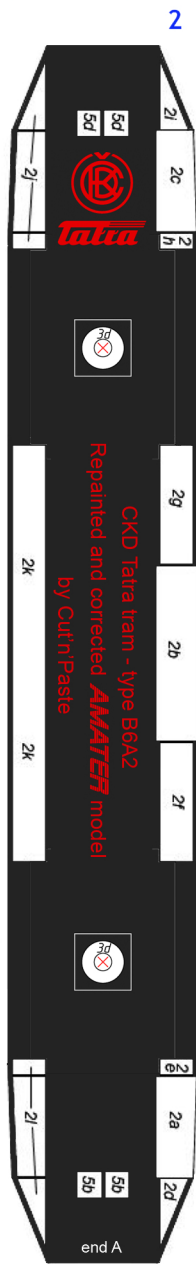
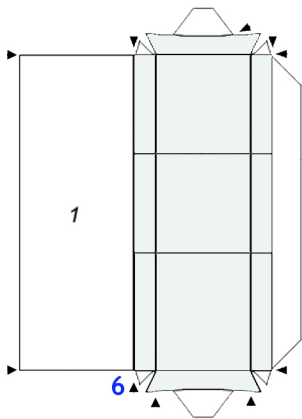
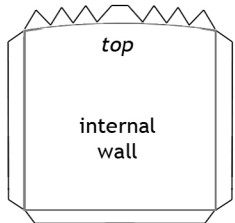
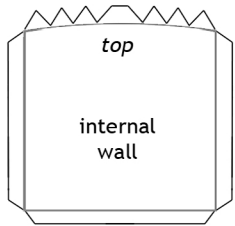
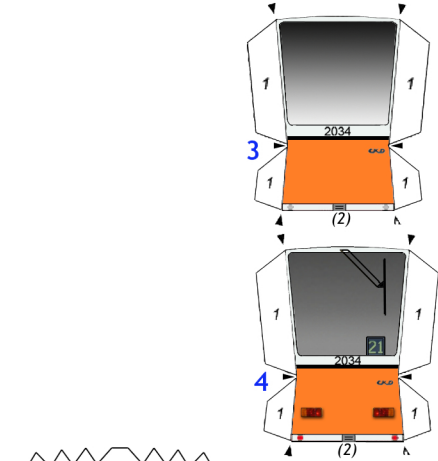
B6A2 Berlin

Tatra B6A2 (Trailer car for T6A2)

Berlin
No. 2034



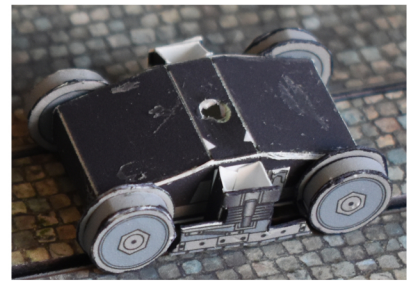
Part numbers are in blue. Numbers in *italics* on or next to a part indicate location of **numbered** part.



- = 180° fold
- = 90° fold (mountain)
- = 90° fold (valley)
- = mountain fold to fit



Tatra B6A2 Page 2



- ▶ = 180° fold
- ▲ = 90° fold (mountain)
- ▼ = 90° fold (valley)

