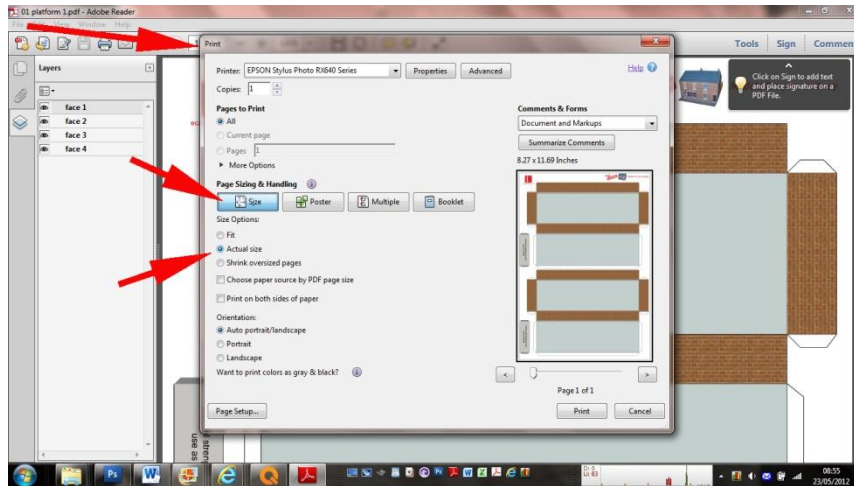


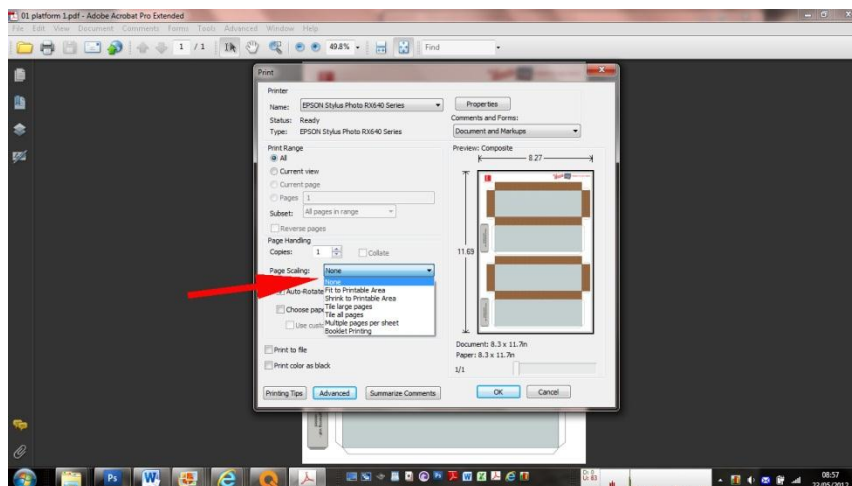
## Scaling a model when printing.

Printing a model at different scales is easy if you follow these instructions. The example given is for a 1/76<sup>th</sup>, OO scale model, but the principle is the same for other scales. Use our [Model Scale Converter](#) to find out the conversion factors.

To print at OO-scale (1/76<sup>th</sup>) set your Adobe Acrobat to 100% like this:

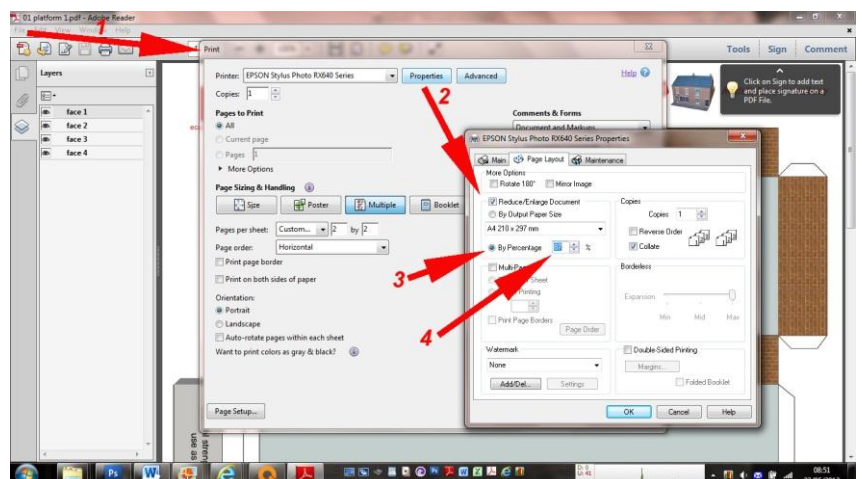


Or:



To print at HO scale (1/87<sup>th</sup>) you need to alter your printer settings to “87%” (This IS correct – a 1/87<sup>th</sup> model is 87% of the size of a 1/76<sup>th</sup> scale model!).

And that’s all there is to it!



Cut ‘n’ Paste  
Nov. 2012