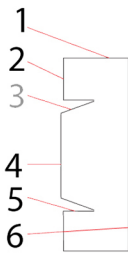


## Building lorry wheels - 1

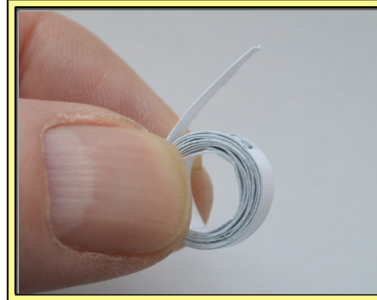
### Single Wheel



1. Identify all the parts of the wheel.



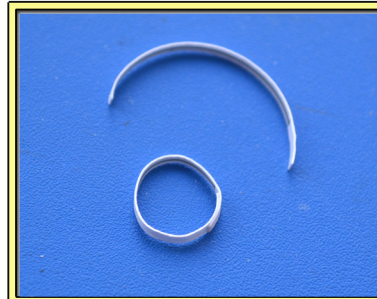
7. Make each tyre face into a shallow cylinder, bringing the printed ends exactly together.



8. Cut out the wheel inner spiral. Coil it tightly into a roll, without glueing it at all.



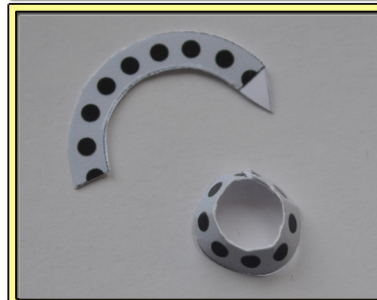
9. Put it into the inside of the cylinder and allow it to spring out to hold the wheel into a circle. Note: if the spiral is more than 2.5mm thick, cut some off it and re-coil it.



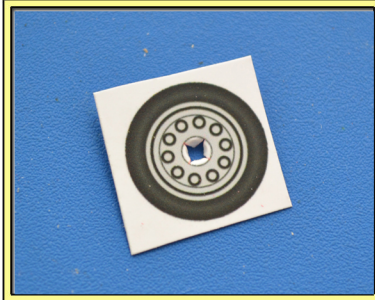
10. Cut out part 5. Make it into a cylinder with the printed side innermost.



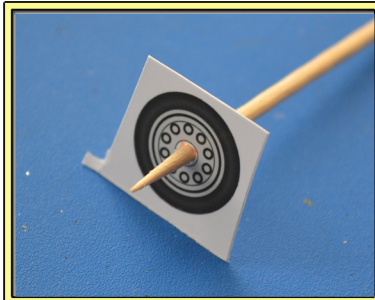
11. Glue this cylinder to the inside of face 2.



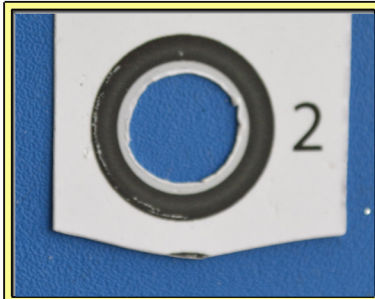
12. Cut out part 3. Glue it into a truncated cone using its tab. The printed side is on the outside. Note that the ends should meet exactly.



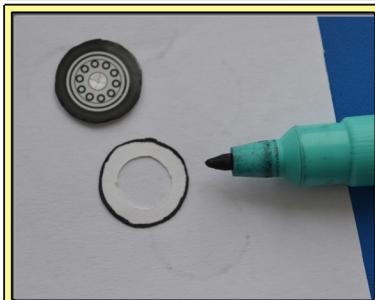
2. Make cuts at the red cross in the centre of face 6



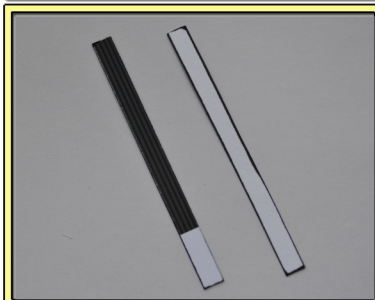
3. Push a cocktail stick through it.



4. Cut out the centre hole in face 2 first, using a scalpel blade. (This is tricky! Take your time.)



5. Then cut out the wheel faces 2 and 6 using fine scissors. Make sure you colour the cut edges with a black felt tip pen.



6. Cut out the tyre faces 1. Colour the edges.