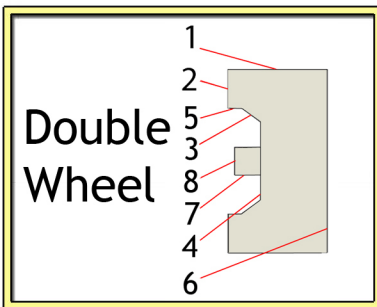


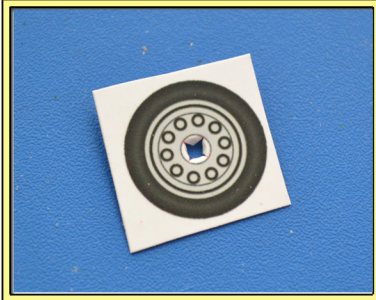
Building lorry wheels - 3



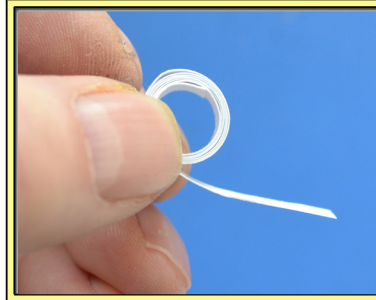
1. Identify all the parts of the wheel.



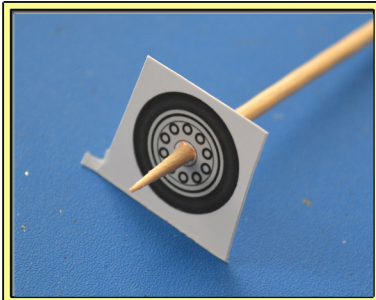
7. Make the tyre face into a shallow cylinder. Make sure the printed edges correspond exactly.



2. Make cuts at the centre of face 6 where the red lines show.



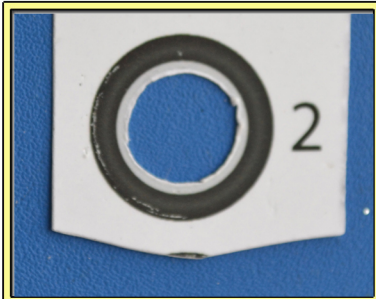
8. Cut out a wheel inner spiral. Coil it tightly - no glue!



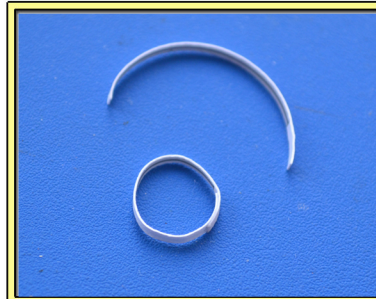
3. Push a cocktail stick through to make the axle hole.



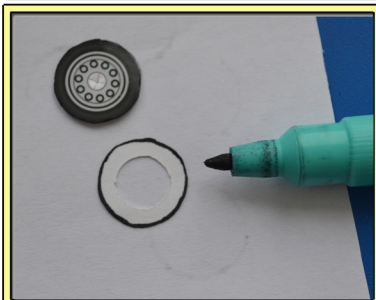
9. Put the spiral into the tyre cylinder and let it spring out to hold the tyre in a circle. Note that if the spiral is more than 2.5mm thick, take it out and shorten it then re-coil it.



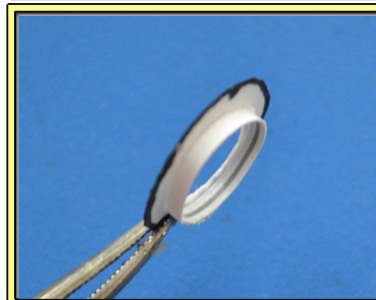
4. Cut out the centre of face 2 using a sharp blade. This is tricky, so take your time!



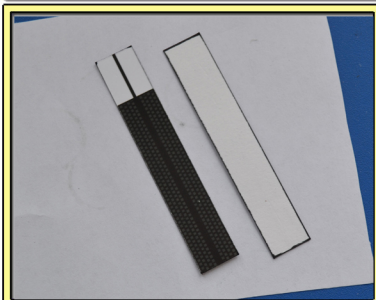
10. Make part 5 into a cylinder, with the printed side innermost. Make sure the printed ends correspond exactly.



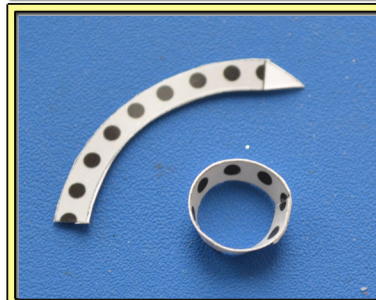
5. Cut out the wheel faces 2 and 6. Colour the cut edges using a black felt tip pen.



11. Glue this cylinder to the inside of face 2 as shown.



6. Cut out the tyre faces 1. Colour the cut edges.



12. Make part 3 into a truncated cone using its tab. The printed side is on the inside. Make sure the printed ends correspond exactly.